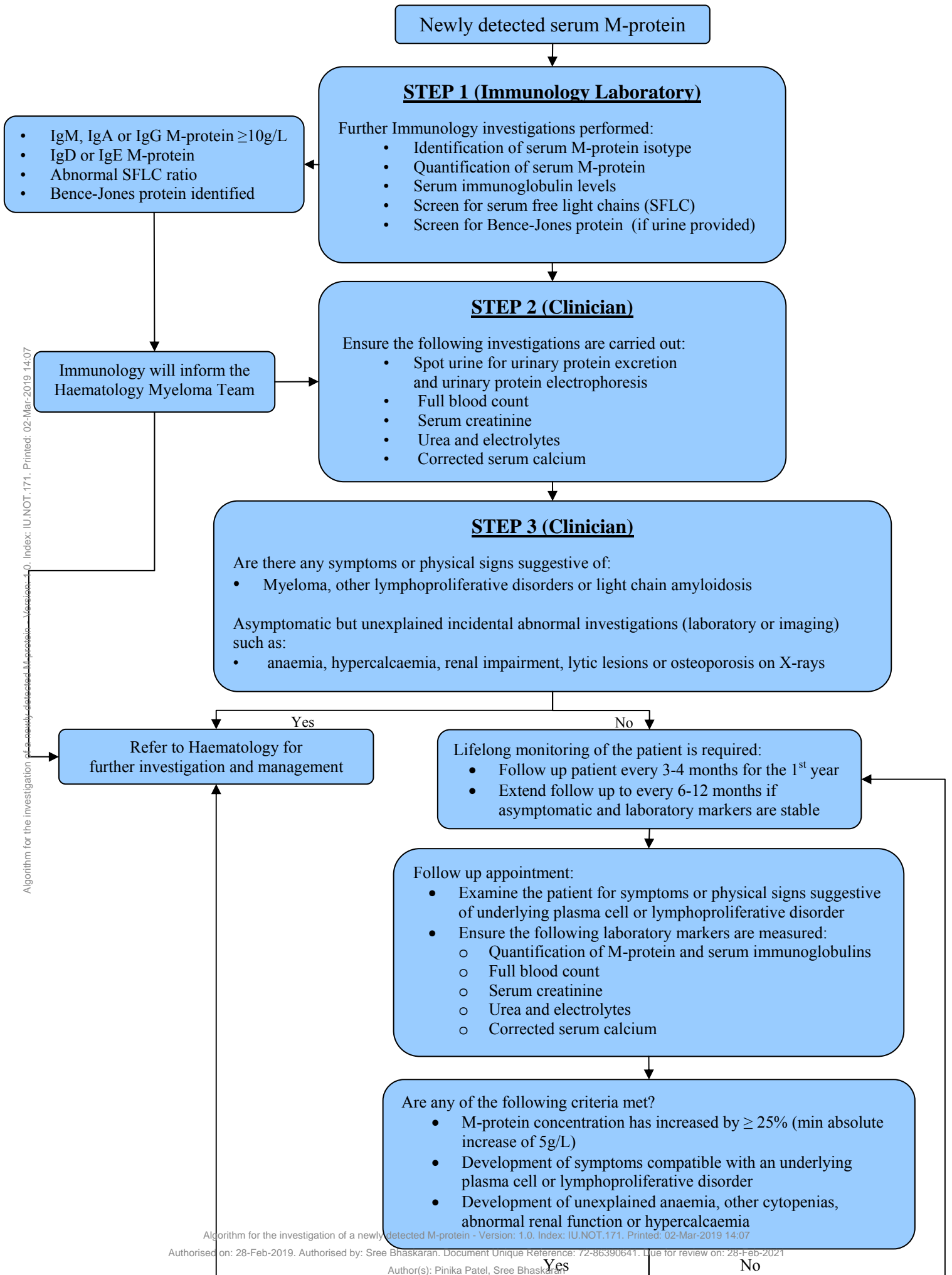


**Algorithm for the investigation of a newly detected M-protein (paraprotein)
Immunology, St Helier Hospital**



Algorithm for the investigation of a newly detected M-protein - Version: 1.0. Index: IU.NOT.171. Printed: 02-Mar-2019 14:07

Guidance Notes

- It is the responsibility of the patient's Clinician to ensure that steps 2 and 3 are carried out
- For more detailed information please refer to our guidance for users: [Investigation of newly detected M-proteins and management of monoclonal gammopathy of undetermined significance \(MGUS\)](#)
- For blood sample requirements please refer to the [pathology test directory](#)